

Guidelines for Poster Presenters

Set up and Dismantle

You will be able to set up your poster at the following times:

- Tuesday from 16.00 – 21.00
- Wednesday from 08.00 – 08.50

Posters will be secured by means of Velcro stickers which will be provided.

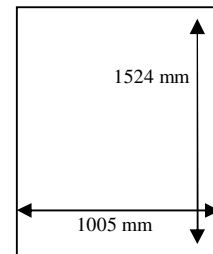
You will be able to remove your poster on Friday 25 June 2010. Unfortunately, any posters remaining at the end of the conference cannot be returned to authors.

Size

Poster boards are 1524mm by 1005mm. This size will fit an A0 paper size. Poster boards will be provided in a portrait orientation **unless** you confirm that you would prefer a landscape orientation by 31 May 2010.

To clarify

- if you want a portrait orientation – do not contact us
- if you want a landscape orientation – email cpd@abdn.ac.uk identifying your poster number and include ROWETT / INRA Landscape Poster in your email subject line



Poster Sessions

Poster Session One: 13.40 – 15.00 Wednesday 23 June 2010

Themes:

- Gut Microbial Communities – Phylogeny, Genomics and Function
- Microbes and the Environment

Poster Session Two: 14.30 – 16.00 Thursday 24 June 2010

Themes:

- Microbial Activities in the Gut
- Impact of Microbial Colonisation on the Host

Please note your abstract may have been moved from your original choice of category.

You will be expected to be at your poster at the relevant poster session.

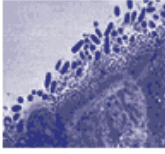
Poster Number and Poster Map

You can find your poster number(s) by [clicking here](#), your poster number includes your selected category, poster position number, original abstract number e.g. P3/99/0298.

A map of where each of the posters will be located will be available shortly.

Poster Abstracts

Please note a copy of your abstract will be included in the abstract booklet provided in the delegate pack.



Gut Microbiology: new insights into gut microbial ecosystems

 Rowett Institute
of Nutrition and Health
University of Aberdeen



Guidelines for Oral Presenters

Presentations will take place in the Flemming Auditorium at the AECC
http://www.aecc.co.uk/flemmingauditorium_1.aspx

You will have access to a laptop / pc loaded with Microsoft Office 2003 attached to a fixed dataprojector. You will have the opportunity to load your presentation prior to your session at the conference – e.g. at lunch and refreshment breaks.

If you would like us to pre-load your presentation please email it to cpd@abdn.ac.uk the name of the file should be your surname (family name) only. If you take this opportunity please also bring your presentation on a USB or other storage media as a back-up.

There will be a lectern microphone and also access to a tie clip microphone for your use. There will also be a roving microphone for the question and answer elements.

A technician is on hand throughout the event to help you with any technical issues.

Presentations are allocated 20 minutes with an additional 5 minutes for questions – please take care not to over-run, we have a busy programme and we are keen to allow the full allocation of time to each presenter.

Oral Abstracts

Please note a copy of your abstract will be included in the abstract booklet provided in the delegate pack.